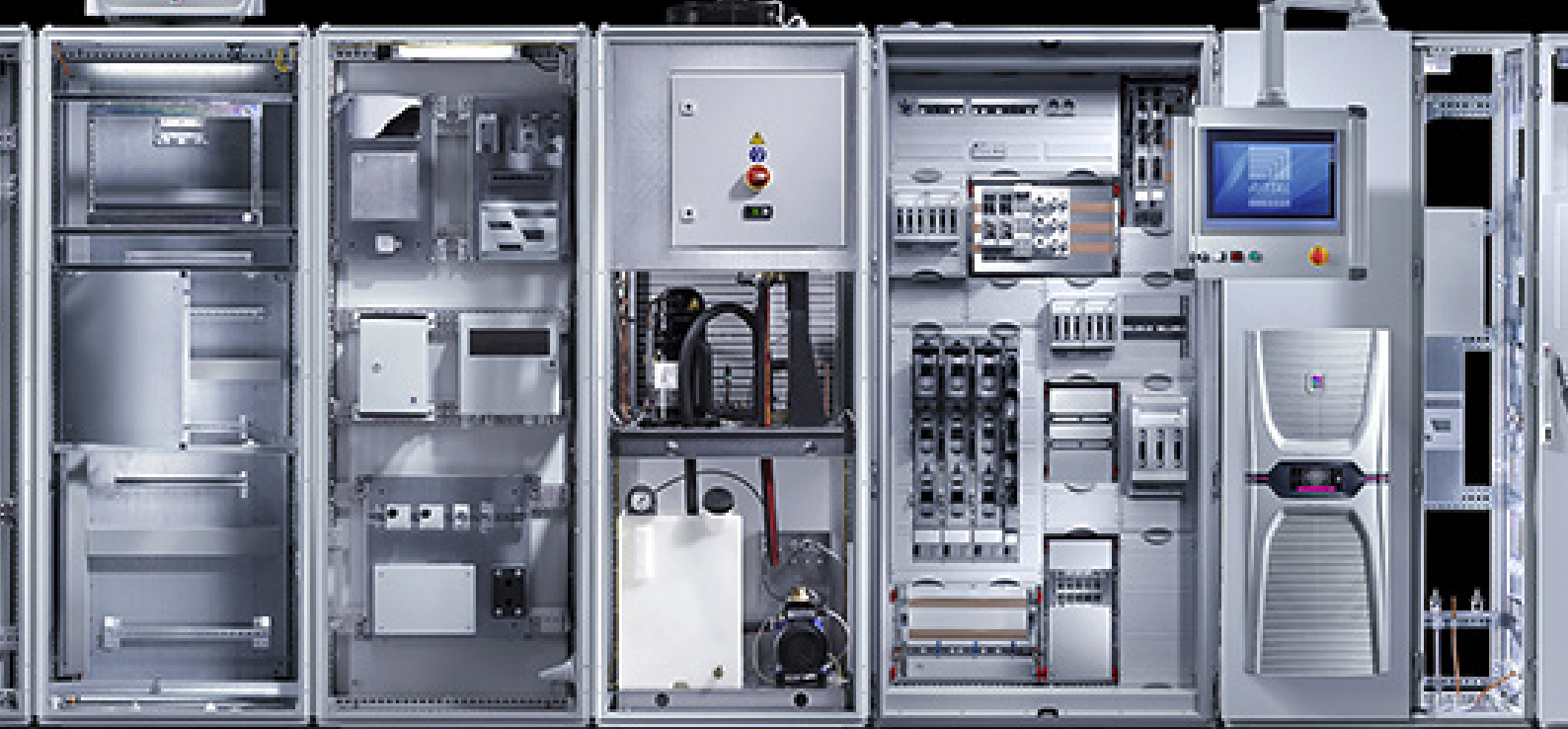


Rittal –The System.

Faster – Better – Worldwide.

Rittal Systems Integrator Program & EPLAN Proficiency Certification





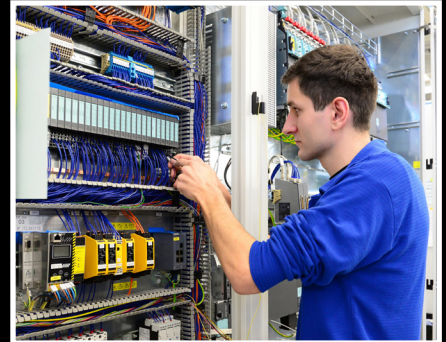
Rittal Certified Systems Integrator

Rittal is a leader in the design and supply of technically sophisticated enclosure solutions. This philosophy of design places emphasis on the user's ability to customize the solution to their specific requirement and to be able to do it with standard, off the shelf enclosures and accessories.

At Rittal Systems we embrace this philosophy through extensive support via our Technical Representatives and our internal Technical Services Group. This team of technical professionals (CET's) provide full application development expertise, bill of material generation and 2D and 3D cad support. This support is further extended by our production team whereby they will fully assemble and integrate the Rittal enclosures and accessories including custom cutouts, painting and other configuration services.

As a next level of technical sophistication we would like to be able to offer to our customers a level of assurance that the System Integration partners they select are knowledgeable, experienced and proficient in specifying and integrating Rittal enclosure solutions.

Rittal's Certified System Integrator program is intended to formally recognize and certify System Integrators that have demonstrated proficiency in specifying and working with Rittal enclosure, climate control and power distribution systems. If you would like to be one of Rittal's Certified System Integration partners, please contact your local Technical Representative.



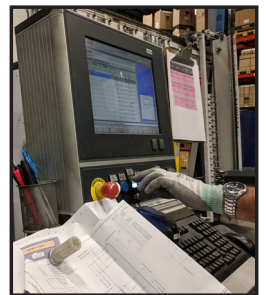
Rittal Certification Classification



- Certified Enclosure and CLimate Control Integrators
- Certified Power Distribution Integrators

Requirements

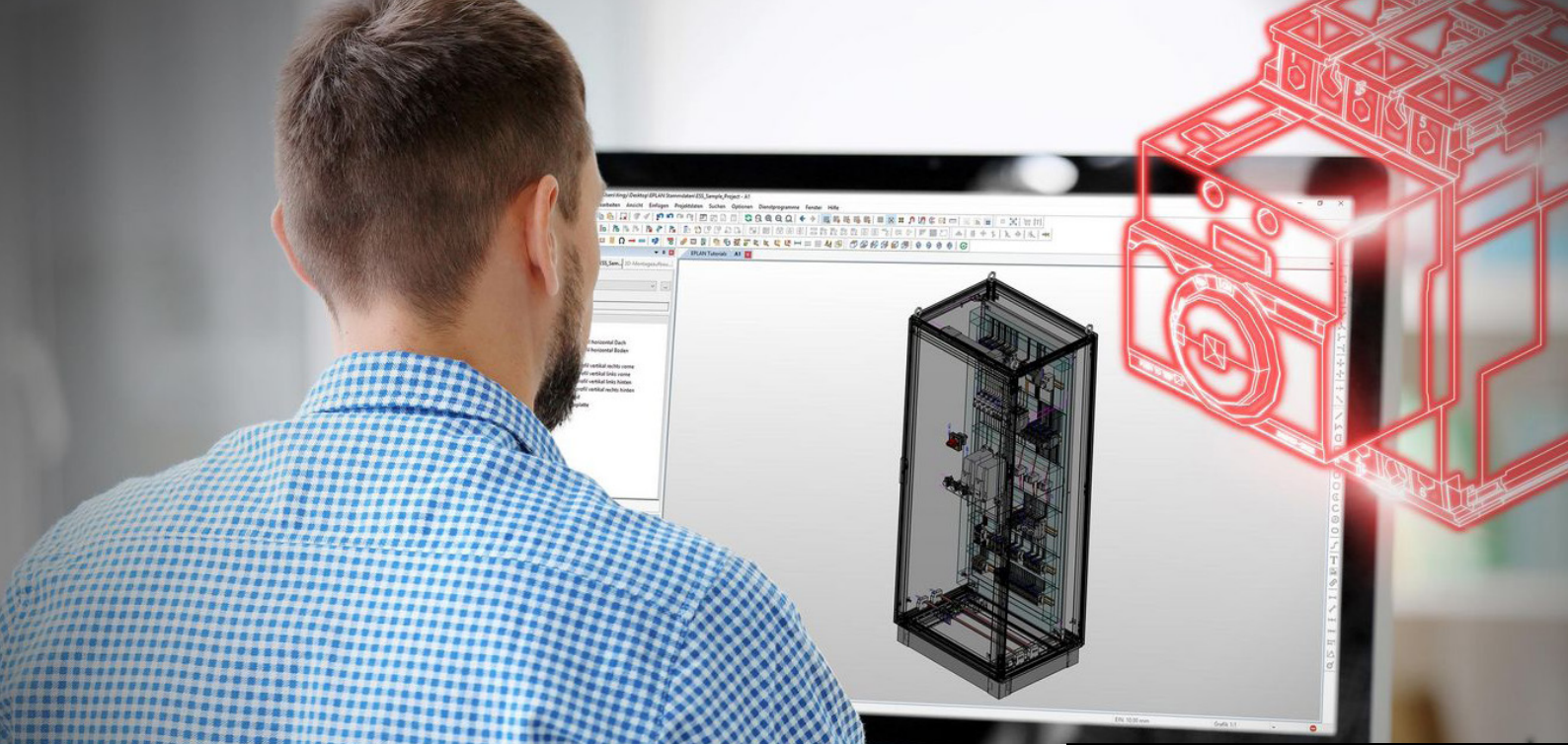
- **Technical Capabilities**
 - AutoCAD proficiency for creation/manipulation of enclosure drawings
 - In-house Rittal Specialist
- **Initial & On-going Training**
 - Rittal University Completion, Webinar Training Participation, Lunch and Learn's quarterly
- **Software Proficiency**
 - Ability to utilize Therm for climate control specification Power Distribution integrators are able to use
 - Power Engineering (Training provided by Rittal's Technical Services Group)
- **Business Planning**
 - Creation of an annual business plan with Rittal
 - Commitment to planned sales volume



Benefits to Certified Systems Integrator

- Listing as a Certified Rittal Systems Integrator on www.rittal.ca website
- Formal recognition letter of their status as a certified integrator on Rittal letterhead that they can use in soliciting business
- Priority training on Rittal product solutions and specification tools
- Rittal Certified Systems Integrator Plaque identifying them as a certified partner of Rittal

For more information visit www.rittal.ca

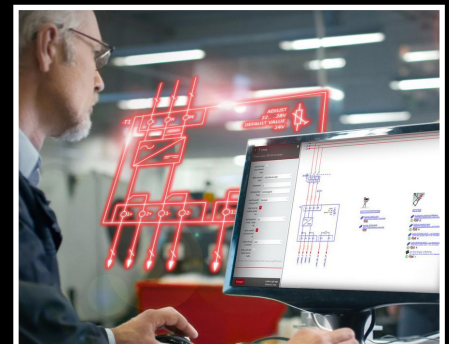
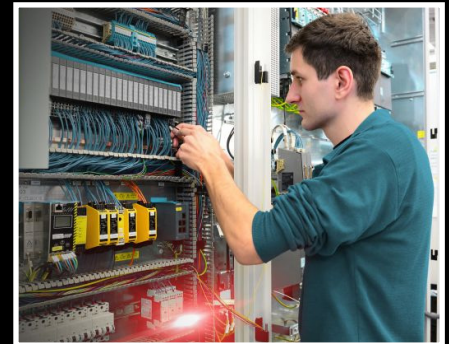
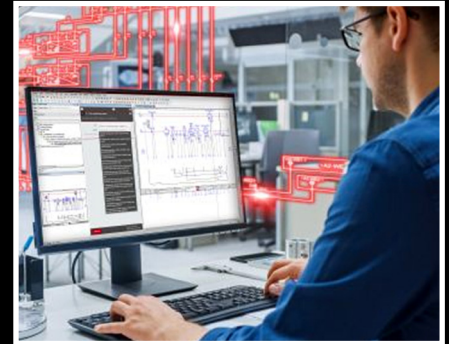


Certified Systems Integrator - EPLAN Proficiency Certification

The future belongs to those who shape it. At EPLAN, we actively promote the digital transition. Systems integrators can reach maximum efficiency by taking advantage of the software and service solutions provided by EPLAN in the fields of electrical, automation and mechatronic engineering. As one of the world's leading design software solutions for machine and panel builders, EPLAN represents the ideal partner to streamline challenging engineering processes.

EPLAN Canada supports its partners in their journey towards certification by providing training, workshops and consulting. Certified Systems Integrators with EPLAN Proficiency have developed the skills and trained experts able to assist customers with full application development, bill of material generation and 2D and 3D Computer-aided engineering support through EPLAN Electric P8 and Pro Panel.

This EPLAN partnership program is recognized as a proficiency in the Rittal Certified Systems Integrator program.



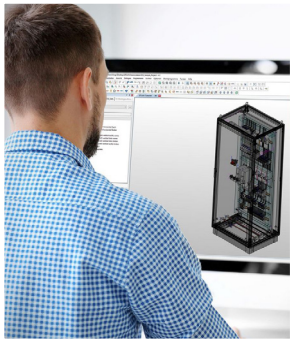
EPLAN Proficiency Certification Levels



Level 1 - EPLAN Fundamental Partner

Requirements

- Commitment to the adoption of EPLAN as a base program for the design and build according to requirements.
- Confirmation of training for a core group of employees and identification of at least one individual for advanced training.
- Development of a structured plan:
 - to advance the adoption of EPLAN within the organisation
 - to commence the conversion of existing files to the common EPLAN format with support from EPLAN Canada.



Level 2 - EPLAN Advanced Partner

Requirements

- Working knowledge of EPLAN and understanding of how to construct the 'digital twin' to add value and speed of build to clients' operations and sales teams.
- Ability to articulate the value to clients of the benefits of this approach, toward the increased speed and accuracy of build.
- Integration of adjacent programs (such as Element Select+) to enhance the value proposition and enhance the vertical/global value of the Friedhelm Loh Group. (or as per the base requirements of key global EPLAN clients, such as TESLA)
- For partners with Rittal Automation System (RAS) equipment, the additional ability to streamline and add value to the production of clients' requirements.



Level 3 - EPLAN Performance Partner

Requirements

- Team of engineers who use EPLAN as the base program of choice for clients' projects of any scope and nature.
- All projects directed through a Rittal Certified System Integrator or the National Rittal Modification Center.
- Meet basic requirements of all global EPLAN end-user customers (e.g. Tesla, Honda)
- Integration of EPLAN into base ERP/CRM programs for daily operations.
- Incorporation of eManage, eVIEW/ePULSE into product lifecycle management.

Benefits to Certified Systems Integrator

- Formal recognition letter of their status as a certified integrator
The letter can be use in soliciting business
- Priority training on Rittal product solutions and specification tools
- Priority training and news about EPLAN Software updates and features

Rittal –The System.

Faster – Better – Worldwide.

- Enclosures
- Power Distribution
- Climate Control
- IT Infrastructure
- Software & Services

Rittal Systems Ltd.
6485 Ordan Drive
Mississauga, ON
L5T 1X2 Canada
Phone: 905-795-0777
Toll Free: 1-800-399-0748
marketing@rittal.ca · www.rittal.ca

EPLAN Canada Inc.
1494, rue Montarville, Suite 205
Saint-Bruno-de-Montarville, QC
J3V 3T5 Canada
Phone: 450-462-3582
Toll Free: 1-844-375-2678
info@eplancanada.com · www.eplancanada.com